

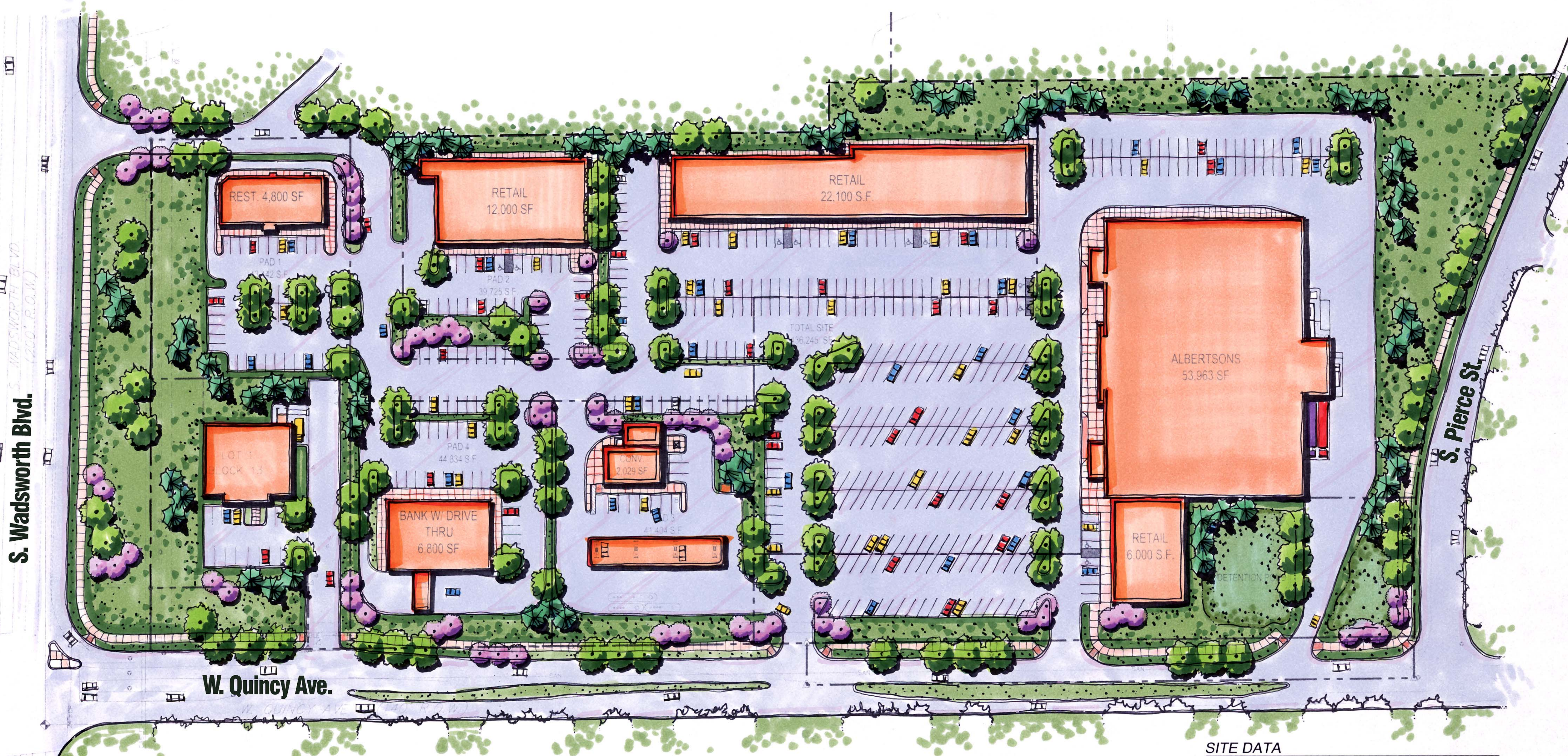
# Academy Park

City of Lakewood, Colorado

Prepared for:



Contact: Craig I. Cahen, President

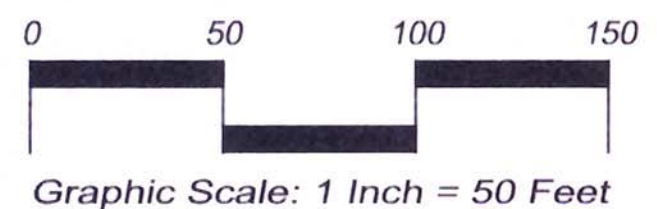


**SITE DATA**

TOTAL SITE	= 436,245 SF (10.01 ACRE)
BUILDING TOTAL	= 83,063 SF (19.0% COVERAGE)

**PARKING**

PROPOSED STANDARD STALLS	= 409 CARS
HANDICAP PARKING STALLS	= 10 CARS
TOTAL STALLS NEEDED	= 419 CARS = (5.01/1,000)
	= 415. CARS (@5/1000)



Graphic Scale: 1 Inch = 50 Feet

## Preliminary Landscape Plan

Drawn by: JLWIV  
 Checked by: LRM  
 Job No: 03020

Submitted: 21 May 2003  
 Revised:

**LAND ARCHITECTS**  
 2681 W. Alamo Avenue • Littleton, Colorado • Ph (303) 734-1777 • Fax (303) 734-1778



MAY 2003