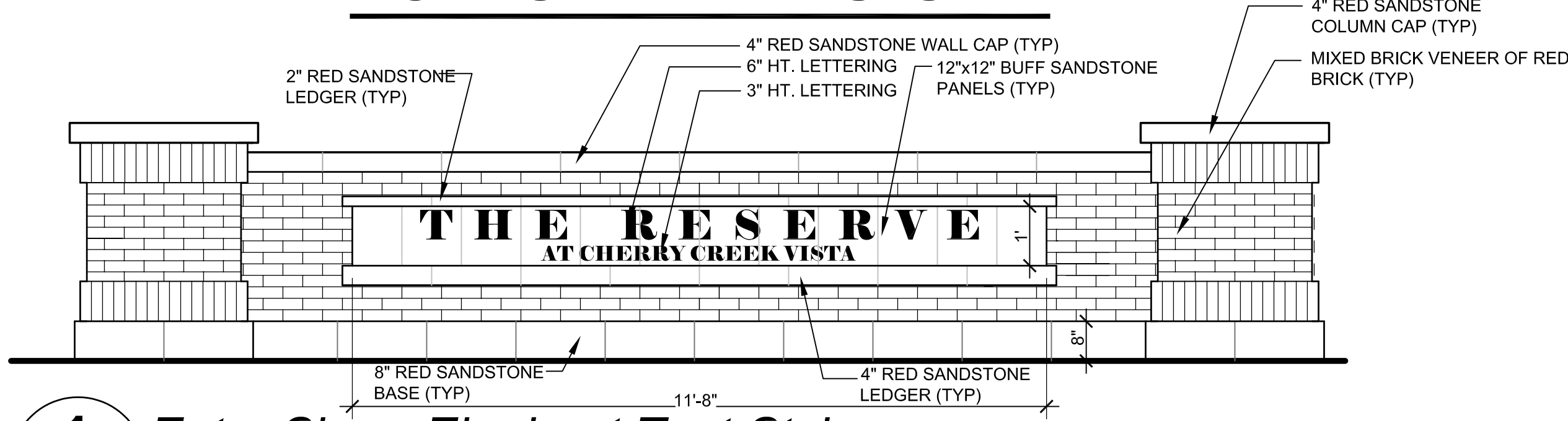


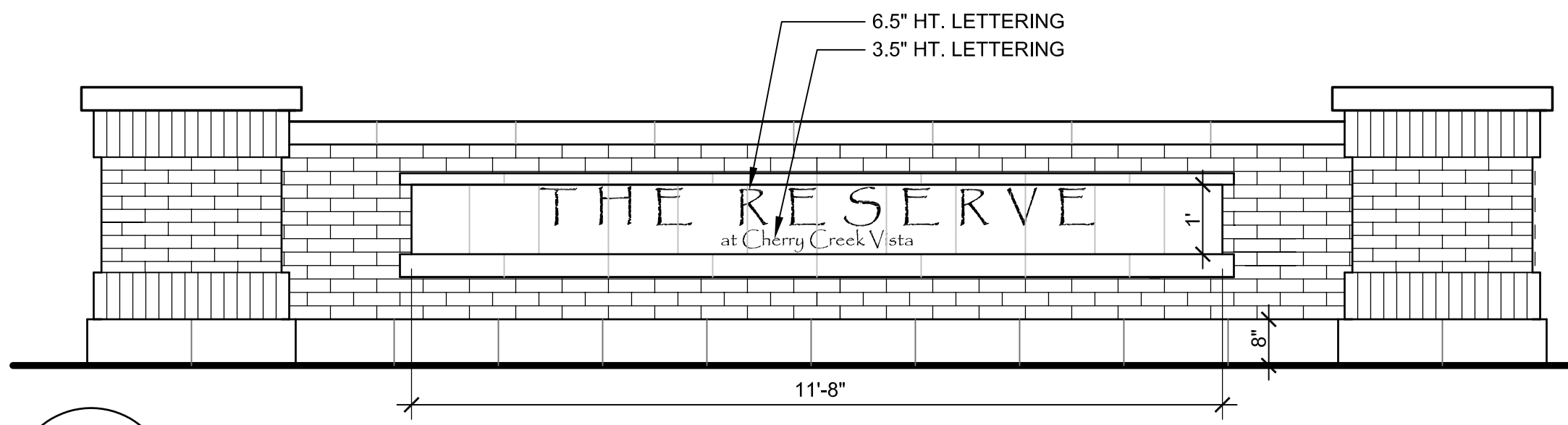
Cherry Creek Vista Subdivision Filing No. #17-B

Greenwood Village, Colorado

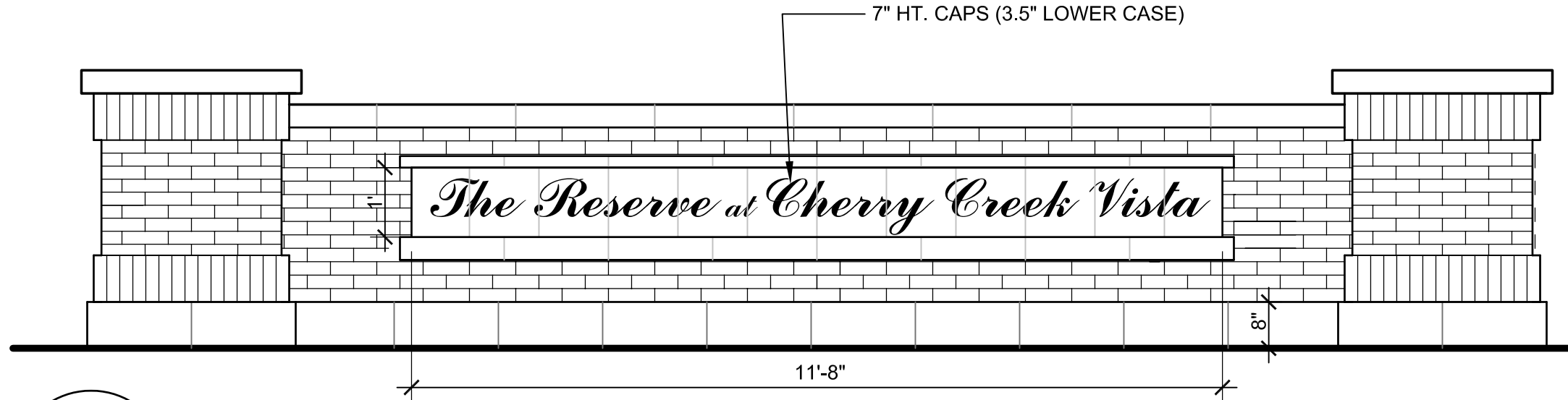
ORIGINAL DESIGN



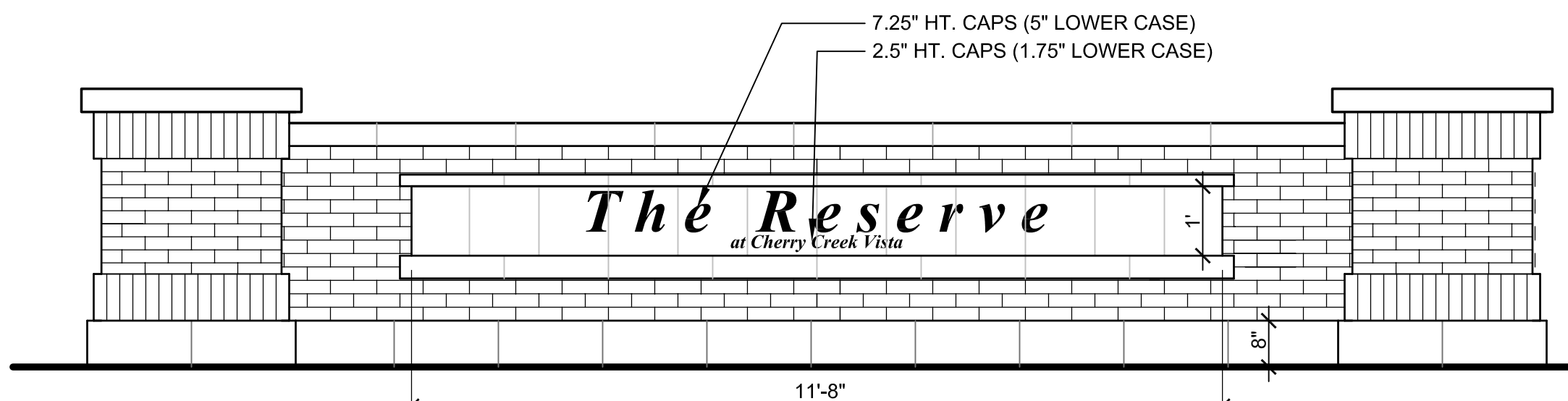
1 Entry Sign - Elephant Text Style
L-1 Scale: 1/2" = 1'



3 Entry Sign - Papyrus Text Style
L-1 Scale: 1/2" = 1'

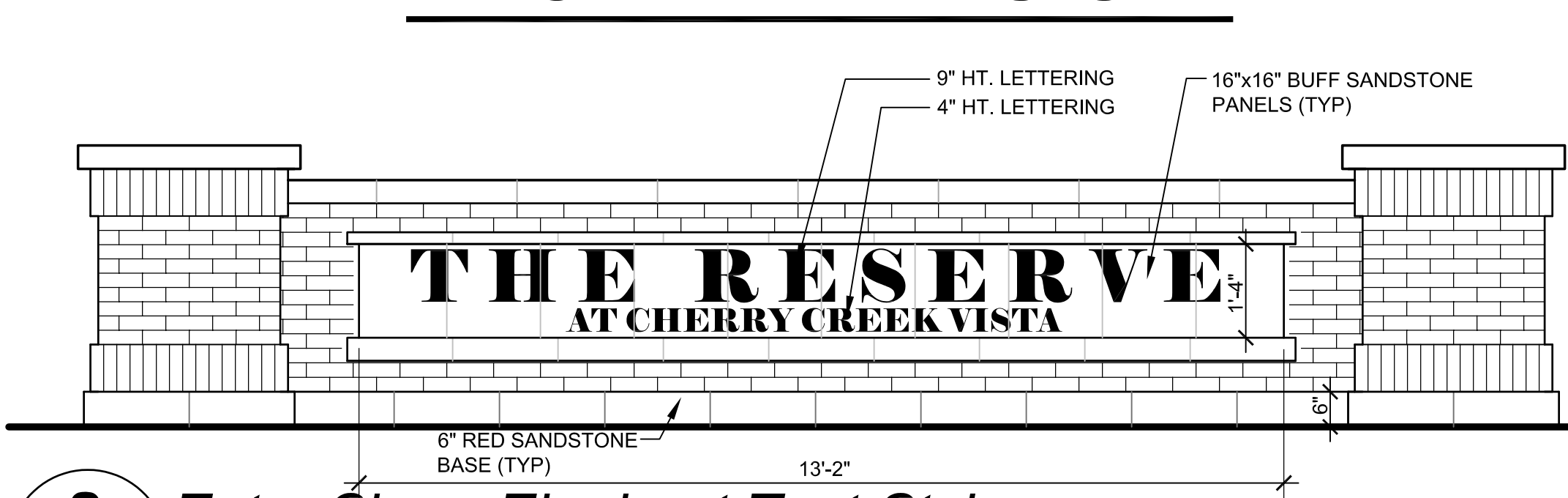


5 Entry Sign - CommercialScripts BT Text Style
L-1 Scale: 1/2" = 1'

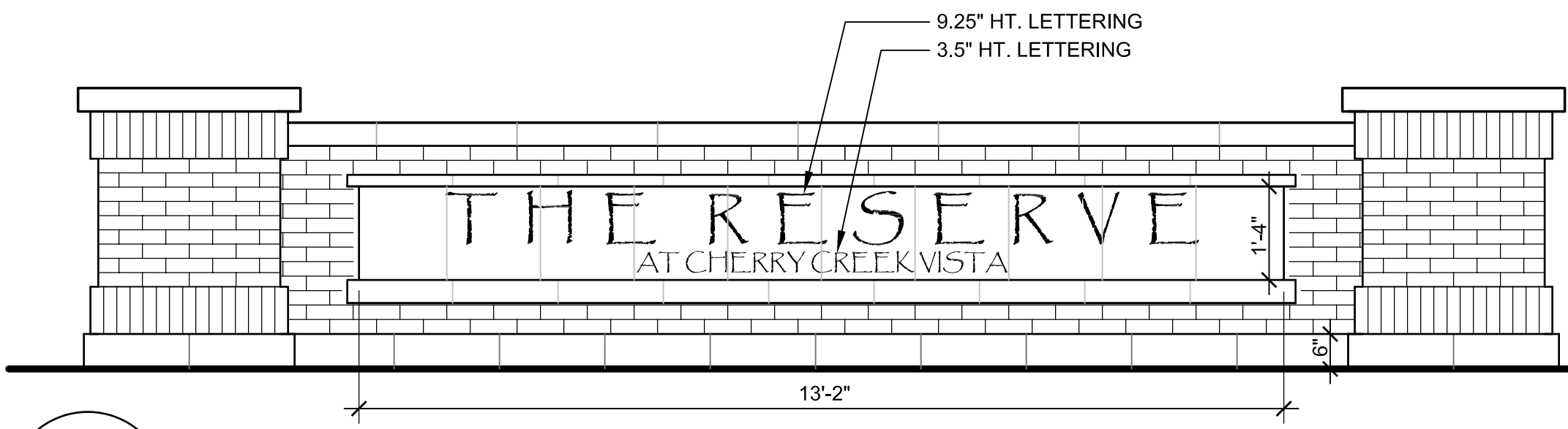


7 Entry Sign - Times New Roman Text Style
L-1 Scale: 1/2" = 1'

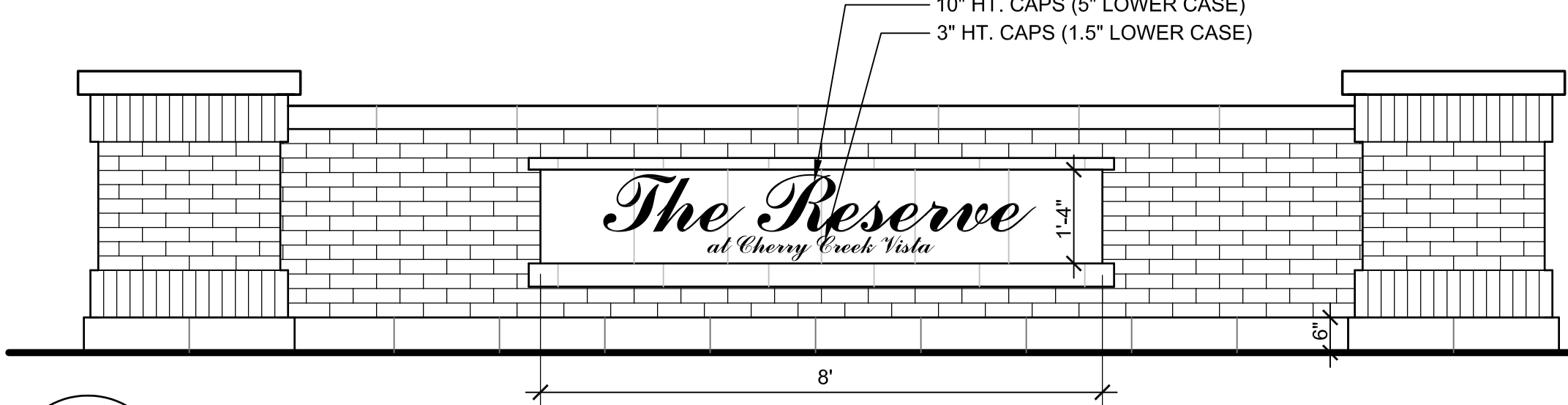
MODIFIED DESIGN



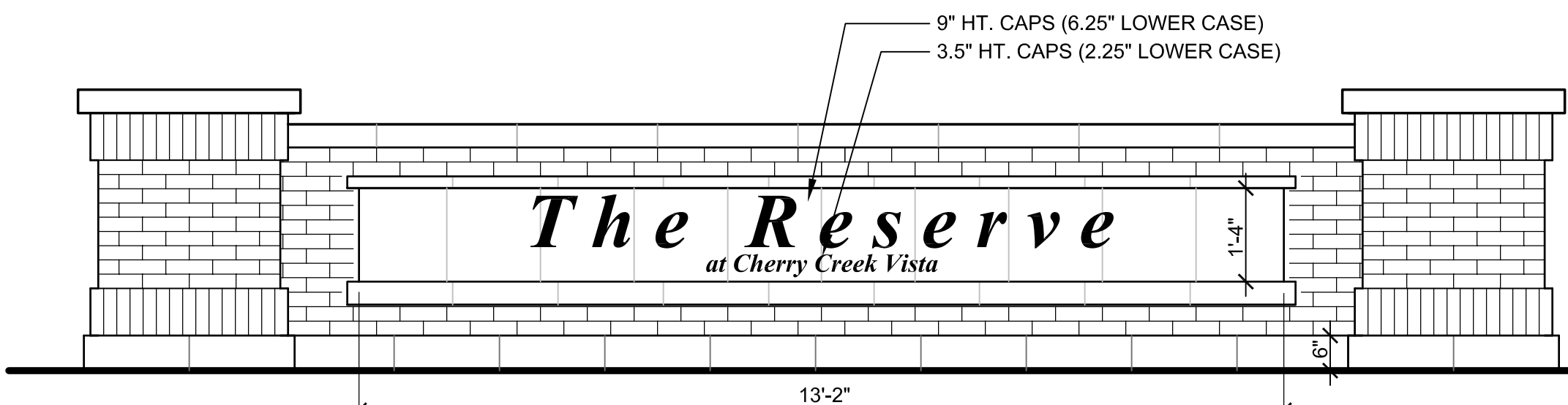
2 Entry Sign - Elephant Text Style
L-1 Scale: 1/2" = 1'



4 Entry Sign - Papyrus Text Style
L-1 Scale: 1/2" = 1'



6 Entry Sign - CommercialScripts BT Text Style
L-1 Scale: 1/2" = 1'



8 Entry Sign - Times New Roman Text Style
L-1 Scale: 1/2" = 1'

NOTE:
 MODIFIED DESIGN CONSISTS OF
 SMALLER STONE BASE (6" TO 8")
 AND LESS A ROW OF BRICK UNDER
 THE ORIGINAL SIGN FACE.

Entry Sign Font Modifications