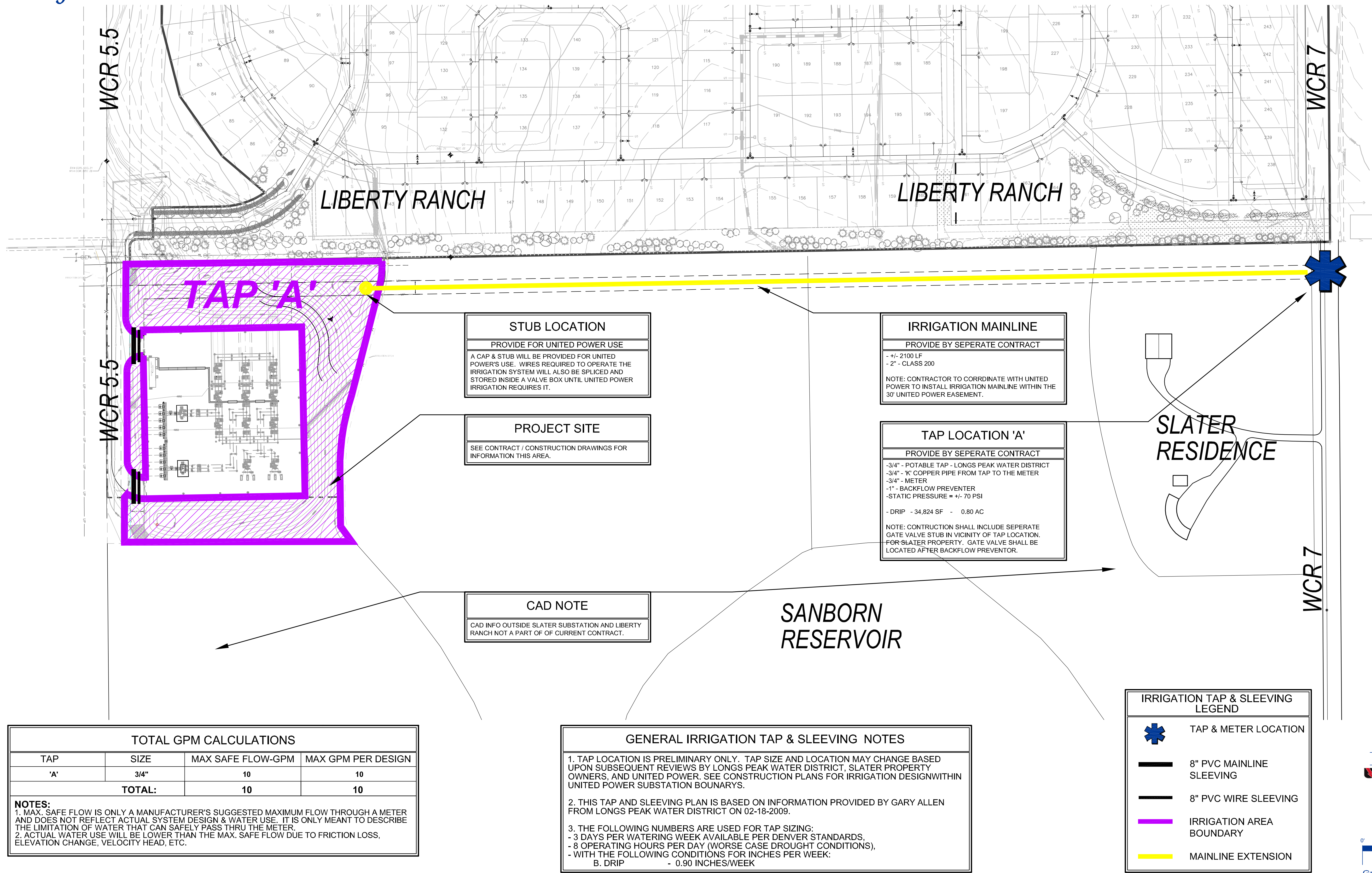


United Power - Slater Power Substation

Weld County, Colorado



WCR 5.5

WCR 7

WCR 5.5

WCR 7

LIBERTY RANCH

LIBERTY RANCH

TAP 'A'

STUB LOCATION

PROVIDE FOR UNITED POWER USE

A CAP & STUB WILL BE PROVIDED FOR UNITED POWER'S USE. WIRES REQUIRED TO OPERATE THE IRRIGATION SYSTEM WILL ALSO BE SPLICED AND STORED INSIDE A VALVE BOX UNTIL UNITED POWER IRRIGATION REQUIRES IT.

PROJECT SITE

SEE CONTRACT / CONSTRUCTION DRAWINGS FOR INFORMATION THIS AREA.

CAD NOTE

CAD INFO OUTSIDE SLATER SUBSTATION AND LIBERTY RANCH NOT A PART OF OF CURRENT CONTRACT.

IRRIGATION MAINLINE

PROVIDE BY SEPERATE CONTRACT

- +/- 2100 LF
- 2" - CLASS 200

NOTE: CONTRACTOR TO CORRDINATE WITH UNITED POWER TO INSTALL IRRIGATION MAINLINE WITHIN THE 30' UNITED POWER EASEMENT.

TAP LOCATION 'A'

PROVIDE BY SEPERATE CONTRACT

- 3/4" - POTABLE TAP - LONGS PEAK WATER DISTRICT
- 3/4" - K' COPPER PIPE FROM TAP TO THE METER
- 3/4" - METER
- 1" - BACKFLOW PREVENTER
- STATIC PRESSURE = +/- 70 PSI
- DRIP - 34,824 SF - 0.80 AC

NOTE: CONSTRUCTION SHALL INCLUDE SEPERATE GATE VALVE STUB IN VICINITY OF TAP LOCATION, FOR SLATER PROPERTY. GATE VALVE SHALL BE LOCATED AFTER BACKFLOW PREVENTOR.

SANBORN RESERVOIR

SLATER RESIDENCE

TOTAL GPM CALCULATIONS






TAP	SIZE	MAX SAFE FLOW-GPM	MAX GPM PER DESIGN
'A'	3/4"	10	10
TOTAL:		10	10

NOTES:
1. MAX. SAFE FLOW IS ONLY A MANUFACTURER'S SUGGESTED MAXIMUM FLOW THROUGH A METER AND DOES NOT REFLECT ACTUAL SYSTEM DESIGN & WATER USE. IT IS ONLY MEANT TO DESCRIBE THE LIMITATION OF WATER THAT CAN SAFELY PASS THRU THE METER.
2. ACTUAL WATER USE WILL BE LOWER THAN THE MAX. SAFE FLOW DUE TO FRICTION LOSS, ELEVATION CHANGE, VELOCITY HEAD, ETC.

GENERAL IRRIGATION TAP & SLEEVING NOTES

1. TAP LOCATION IS PRELIMINARY ONLY. TAP SIZE AND LOCATION MAY CHANGE BASED UPON SUBSEQUENT REVIEWS BY LONGS PEAK WATER DISTRICT, SLATER PROPERTY OWNERS, AND UNITED POWER. SEE CONSTRUCTION PLANS FOR IRRIGATION DESIGN WITHIN UNITED POWER SUBSTATION BOUNDARYS.
2. THIS TAP AND SLEEVING PLAN IS BASED ON INFORMATION PROVIDED BY GARY ALLEN FROM LONGS PEAK WATER DISTRICT ON 02-18-2009.
3. THE FOLLOWING NUMBERS ARE USED FOR TAP SIZING:
- 3 DAYS PER WATERING WEEK AVAILABLE PER DENVER STANDARDS,
- 8 OPERATING HOURS PER DAY (WORSE CASE DROUGHT CONDITIONS),
- WITH THE FOLLOWING CONDITIONS FOR INCHES PER WEEK:
 B. DRIP - 0.90 INCHES/WEEK

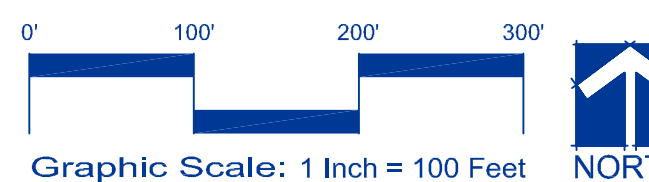
IRRIGATION TAP & SLEEVING LEGEND

-  TAP & METER LOCATION
-  8" PVC MAINLINE SLEEVING
-  8" PVC WIRE SLEEVING
-  IRRIGATION AREA BOUNDARY
-  MAINLINE EXTENSION

APPLICANT/CLIENT

UNITED POWER

Your Touchstone Energy® Partner
500 Cooperative Way
Brighton, CO 80603
Ph: (303) 659-0551
Fx: (303) 637-1338
Contact: Adrian Mendoza



Irrigation Tap & Sleeving Plan

February 18, 2009

Copyright © Land Architects International. All Rights Reserved.

LAND ARCHITECTS

perspective | balance | solutions

Highlands Ranch 303.734.1777 | www.landarchitects.net